

HTP: Duct transducer for relative humidity

How energy efficiency is improved

Accurate recording of air humidity in pneumatic installations for optimal control of HVAC systems.

Areas of application

Continuous measurement and/or control of relative humidity in combination with pneumatic control equipment, e.g. in ducting.

Features

- Part of the Centair family of systems
- Conversion of relative air humidity into a standard 0.2 to 1.0 bar pneumatic signal
- Sensor tube made of glass-fibre-reinforced thermoplastic
- Measuring element consists of temperature-compensated humidity sensor with stabilised artificial textile tape
- Fixing flange supplied with seal for duct and wall mounting
- Compressed-air connection Rp 1/8"
- Complies with directive 97/23/EC Art. 3.3 on pressure equipment

Technical description

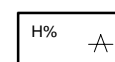
- Supply pressure 1.3 bar \pm 0.1
- Nozzle/ball system
- Hysteresis of output signal < 4% rH

Type	Range %rh	Output pressure bar	Weight kg
HTP 151 F001	20...90	0,2...1,0	0,3
Supply pressure ¹⁾ via ext. restrictor \varnothing 0,2 mm	1,3 bar \pm 0,1	Permissible ambient temp.	0...70 °C
Air capacity, air consumption	33 l _n /h	Effect of temperature	compensated
Linearity	see characteristic	Wiring diagram	A07692
Hysteresis	4% rh	Dimension drawing	M07694
Time constant at 0,2 m/s	approx. 3 min	Fitting instructions	MV 505514
Max. air speed	10 m/s		

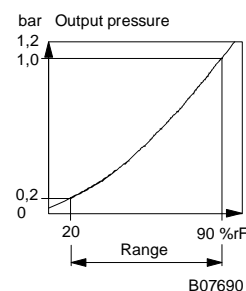
1) In the RCP/RPP 20 standard controllers, the restrictors (\varnothing 0,2 mm) are fitted at inputs 3 and 4. For regulations concerning the quality of the air supply, especially at low ambient temperatures, see Section 60.



T07782



Y02820



B07690

Operation

The synthetic textile strip expands as the humidity rises, creating a proportionate stroke on the lever system. The stroke is converted by a conversion spring into a force. The bleed-off nozzle-ball system converts this force into a corresponding change of pressure. As the humidity rises, so does the output pressure.

Technical information

Technical manual for *centair* system 304991 001

Архангельск (8182)63-90-72
Астана +7(7172)727-132
Белгород (4722)40-23-64
Брянск (4832)59-03-52
Владивосток (423)249-28-31
Волгоград (844)278-03-48
Вологда (8172)26-41-59
Воронеж (473)204-51-73
Екатеринбург (343)384-55-89
Иваново (4932)77-34-06
Ижевск (3412)26-03-58
Казань (843)206-01-48

Калининград (4012)72-03-81
Калуга (4842)92-23-67
Кемерово (3842)65-04-62
Киров (8332)68-02-04
Краснодар (861)203-40-90
Красноярск (391)204-63-61
Курск (4712)77-13-04
Липецк (4742)52-20-81
Магнитогорск (3519)55-03-13
Москва (495)268-04-70
Мурманск (8152)59-64-93
Набережные Челны (8552)20-53-41

Нижний Новгород (831)429-08-12
Новокузнецк (3843)20-46-81
Новосибирск (383)227-86-73
Орел (4862)44-53-42
Оренбург (3532)37-68-04
Пенза (8412)22-31-16
Пермь (342)205-81-47
Ростов-на-Дону (863)308-18-15
Рязань (4912)46-61-64
Самара (846)206-03-16
Санкт-Петербург (812)309-46-40
Саратов (845)249-38-78

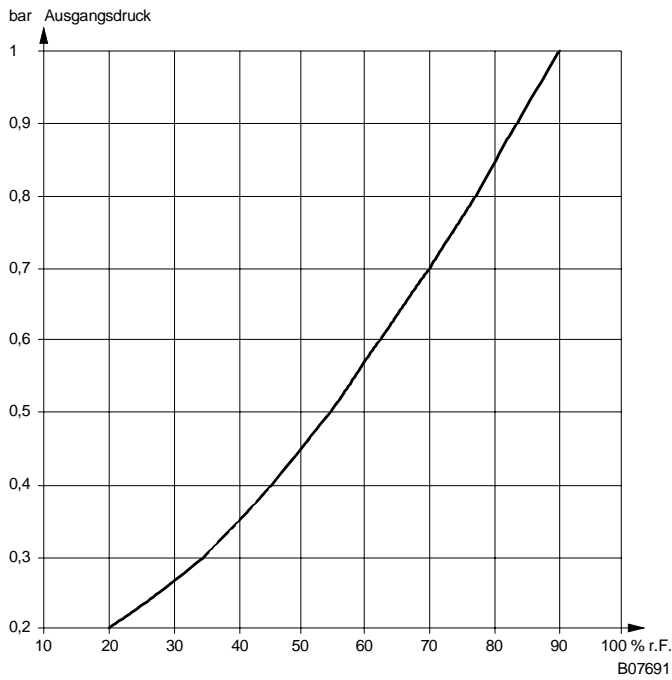
Смоленск (4812)29-41-54
Сочи (862)225-72-31
Ставрополь (8652)20-65-13
Тверь (4822)63-31-35
Томск (3822)98-41-53
Тула (4872)74-02-29
Тюмень (3452)66-21-18
Ульяновск (8422)24-23-59
Уфа (347)229-48-12
Челябинск (351)202-03-61
Череповец (8202)49-02-64
Ярославль (4852)69-52-93

Единый адрес для всех регионов: sxr@nt-rt.ru || www.sauter.nt-rt.ru

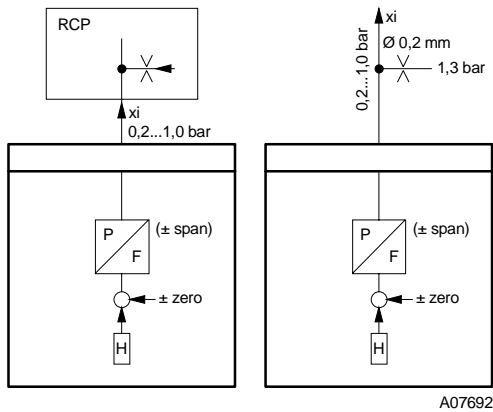
Engineering and fitting notes

To compensate for the positional effects, the Allen screw on the nozzle-ball system can be adjusted.

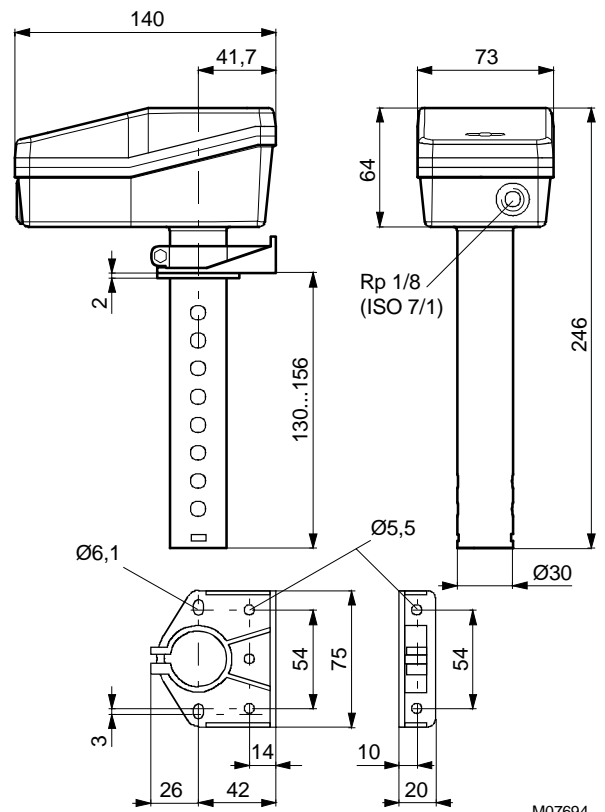
Output pressure dependent on relative humidity at 23 °C



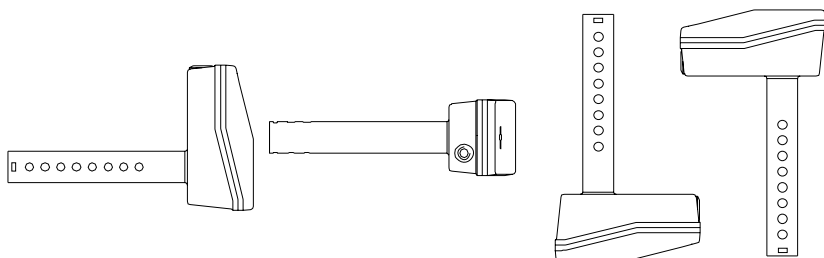
Wiring diagram



Dimension drawing



Permissible fitting positions



Compensate for effects of position

B07693

Архангельск (8182)63-90-72
Астана +7(7172)727-132
Белгород (4722)40-23-64
Брянск (4832)59-03-52
Владивосток (423)249-28-31
Волгоград (844)278-03-48
Вологда (8172)26-41-59
Воронеж (473)204-51-73
Екатеринбург (343)384-55-89
Иваново (4932)77-34-06
Ижевск (3412)26-03-58
Казань (843)206-01-48

Калининград (4012)72-03-81
Калуга (4842)92-23-67
Кемерово (3842)65-04-62
Киров (8332)68-02-04
Краснодар (861)203-40-90
Красноярск (391)204-63-61
Курск (4712)77-13-04
Липецк (4742)52-20-81
Магнитогорск (3519)55-03-13
Москва (495)268-04-70
Мурманск (8152)59-64-93
Набережные Челны (8552)20-53-41

Нижний Новгород (831)429-08-12
Новокузнецк (3843)20-46-81
Новосибирск (383)227-86-73
Орел (4862)44-53-42
Оренбург (3532)37-68-04
Пенза (8412)22-31-16
Пермь (342)205-81-47
Ростов-на-Дону (863)308-18-15
Рязань (4912)46-61-64
Самара (846)206-03-16
Санкт-Петербург (812)309-46-40
Саратов (845)249-38-78

Смоленск (4812)29-41-54
Сочи (862)225-72-31
Ставрополь (8652)20-65-13
Тверь (4822)63-31-35
Томск (3822)98-41-53
Тула (4872)74-02-29
Тюмень (3452)66-21-18
Ульяновск (8422)24-23-59
Уфа (347)229-48-12
Челябинск (351)202-03-61
Череповец (8202)49-02-64
Ярославль (4852)69-52-93

Единый адрес для всех регионов: sxr@nt-rt.ru || www.sauter.nt-rt.ru