

XGP 2: Pneumatic control-pressure adjuster

Areas of application

Remote adjuster for setpoint adjustment of pneumatic controllers (e.g. Centair), plus manual control of small pneumatic control units.

Features

- Setting knob with interchangeable scales and 2 stops for limiting the setting range or locking the setting
- Suitable for fitting into panels or for recessed mounting
- Complies with directive 97/23/EC Art. 3.3 on pressure equipment

Technical description

- Supply pressure 1.3 bar \pm 0.1



T03070



Y03461

Type	Setting range bar	Setting span ¹⁾ bar	Scale ²⁾ °C	Weight kg
XGP 2 F001	0...1,2	–	5...35	0,029
XGP 2 F002	–	\pm 0,1	\pm 3,75	0,029
Supply pressure ³⁾	1,3 \pm 0,1 bar		Permissible ambient temp	0...55 °C
Air capacity, air consumption			Connection diagram	A03462
with restrictor \varnothing 0,14 mm	16 l _n /h		Dimension drawing	M297201
with restrictor \varnothing 0,2 mm	33 l _n /h		Fitting instructions	MV 7320
Output pressure	0...1,2 bar			

Accessories

- 0303124 000*** Recessed junction box
- 0297212 000*** Intermediate plate for fitting into recessed junction box
- 0296218 000*** Buckle-proof connector-adaptor for push-on installation
- 0296990 000*** Buckle-proof connector-adaptor for screw-type installation; MV 7322

*) Dimension drawing or wiring diagram are available under the same number

- 1) Zero point is variable between 0,2 and 1,0 bar; factory setting is 0,6 bar.
- 2) F001: rear 0...120 °C. Included are: 20...90 %rh, % scale, gradation 5, gradation 6.
F002: rear \pm 8,75 %rh. Inscrutable scale is included.
- 3) See Section 60 on regulations concerning the quality of supply air, especially at low ambient temperature.

Operation

The output pressure rises when the adjuster knob is turned in a clockwise direction.

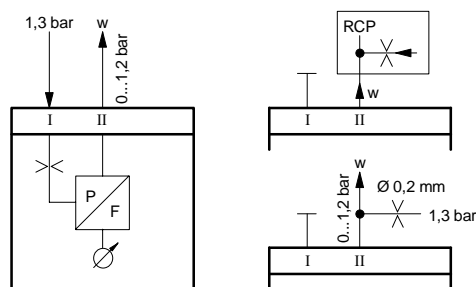
Single-tube connection

The transmitter is supplied with air via connector no. II through either an external restrictor (\varnothing 0,2 mm) or the restrictor (\varnothing 0,14 mm) in connector no. 6 in the *centair* controllers. Connector no. I remains closed off by the cap (included in delivery).

Double-tube connection

The transmitter is supplied with air via the integrated restrictor (\varnothing 0,2 mm). Connector no. I is for supply pressure; no. II for output pressure.

Connection diagram



Double-tube
connection

Single-tube
connection

