

## XGP 2L: Heavy-duty, pneumatic control-pressure adjuster

### Areas of application

Remote adjuster for setpoint adjustment of pneumatic controllers (e.g. Centair) with large capacity.  
Manual control of pneumatic control units.

### Features

- Integrated minimum or maximum limiting of control pressures
- Setting knob with interchangeable scales and 2 stops for limiting the setting range or locking the setting
- Suitable for fitting into panels or for recessed mounting
- Complies with directive 97/23/EC Art. 3.3 on pressure equipment

### Technical description

- Supply pressure 1.3 bar  $\pm$  0.1

Type	Setting range <sup>1)</sup> bar	Air capacity $l_p/h$	Weight kg
<b>XGP 2L F001</b>	0...1,2	400	0,09
Supply pressure <sup>2)</sup>	1,3 $\pm$ 0,1 bar	Permissible ambient temp.	0...55 °C
Air consumption <sup>3)</sup>	7 $l_p/h$		
Output pressure	0...1,2 bar		
		Connection diagram	<a href="#">A03466</a>
		Dimension drawing	<a href="#">M297370</a>
		Fitting instructions	<a href="#">MV 7321</a>

### Accessories

- 0296936 000\*** Bracket for EN 60715, 35 × 7,5 and 35 × 15 rail
- 0296937 000\*** Bracket for C EN 60715-C20 rail and for wall mounting
- 0296218 000\*** Buckle-proof connector-adaptor for push-on installation
- 0296990 000\*** Buckle-proof connector-adaptor for screw-type installation; MV 7322

\*) Dimension drawing or wiring diagram are available under the same number

- 1) Scale: 0...1,2 bar, 'tail' increasing in thickness. Rear scale: 0...1,2 bar, 'tail' decreasing. Inscrutable scale (0...100%) is included underneath the normal scale.
- 2) See Section 60 on regulations concerning the quality of supply air, especially at low ambient temperature.
- 3) 40  $l_p/h$  when measuring connection is open (provides greater response sensitivity).

### Operation

The transmitter's functions can be split up as follows:-

#### Pressure adjustment

The output pressure increases when the adjuster knob is turned in a clockwise direction. If greater response sensitivity is required, the measuring connection (M4 sealing screw) must be loosened by one or two turns.

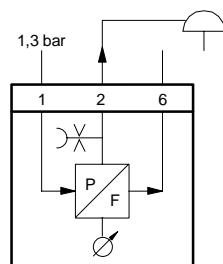
#### Minimum limitation

The minimum value increases when the adjuster knob is turned in a clockwise direction. The setting of the minimum value is protected by an in-built diode. The M4 sealing screw is closed for both bleed-off and non-bleed-off systems.

#### Maximum limitation

The maximum value increases when the adjuster knob is turned in a clockwise direction. The M4 sealing screw is closed for bleed-off systems; for non-bleed-off systems, the M4 sealing screw must be loosened by one or two turns.

### Connection diagram



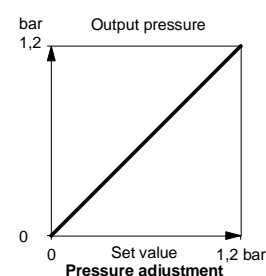
A03466



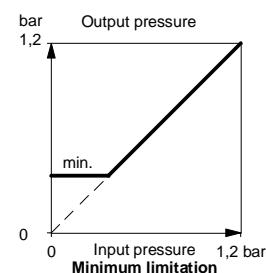
T03215



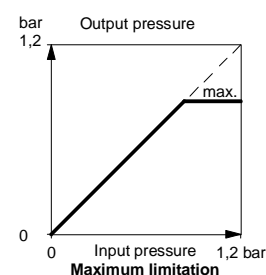
Y03461



B03463

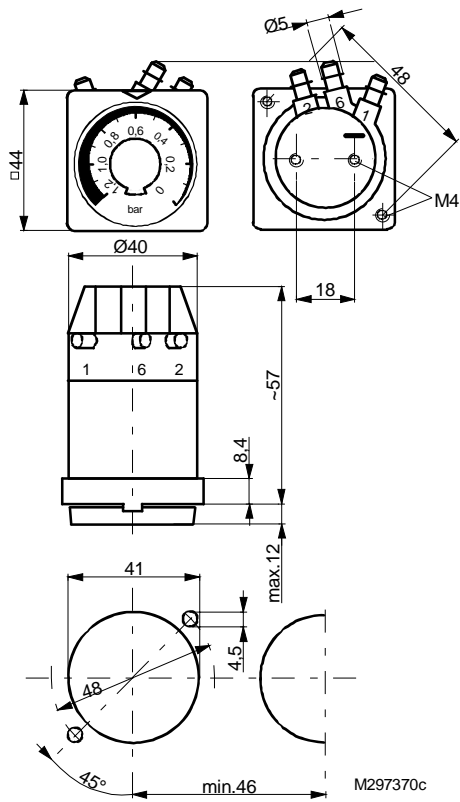


B03464



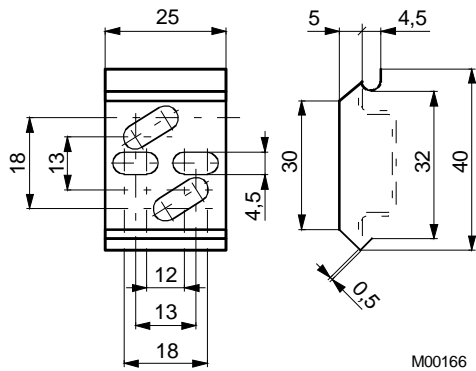
B03465

Dimension drawing

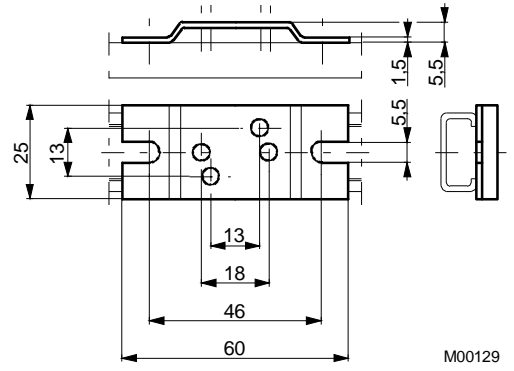


Accessories

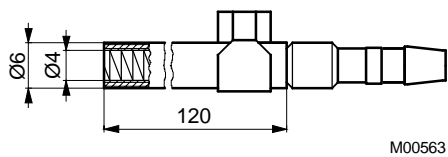
296936



296937



296218



296990

